

Jomar[®]

IntelliDrive Injection Blow Molding Series



Introduction of the Jomar IntelliDrive Series Available in Model 85S, 135 & 175



- **Up to 50% energy savings***
- **Faster dry cycle times**
- **18-month warranty on hydraulics**
(see Jomar for details)
- **40% less hydraulic oil needed**
- **Up to 40% less tower water**
- **Less noise & vibration**
- **Remote access capabilities**

Same footprint as standard Jomar

*Energy consumption figures contingent upon machine model, container specification and material process



Introduction of the Jomar IntelliDrive Series

- Lower utility costs
- Higher production rates
- Low replacement costs
- Prolonged cylinder life
- Prolonged mold life
- Remote monitoring
- Industry 4.0-ready





Jomar IntelliDrive Series

Servo-driven Plastifier

- Normal hydraulic systems have a fixed-speed motor that constantly circulates the oil from the reservoir to the actuator. Pump is constantly running even when the machine parts are stationary.
- Servo-driven pumps have dynamic, direct pressure and flow control via a variable-speed servo motor.
- Energy savings equivalent to all-electric machines
- Oil tanks and pumps can be reduced in size
- Reduces heat, so smaller heat exchangers and less tower water are necessary





Jomar IntelliDrive Series

Radial piston motor

Increased performance & Energy savings

- Can achieve a higher RPM, even with existing hydraulics.
- High power to weight ratio
- High efficiency & High reliability (11% more efficient)
- Very low vibrations on driven machine and hoses
- Can withstand shock and being over-energized
- Retro kit available





Jomar IntelliDrive Series

Closed Loop Cylinder control

- Dry cycle time is .5 seconds faster
1.8 vs 2.3 seconds on standard Jomar Model 85S
2.5 vs 3.0 seconds on standard Jomar Models 135 and 175
- Will prolong cylinder life
Tighter control of cylinder position means there is no jarring upon opening or closing
- Will prolong mold life
Reduced impact upon tooling

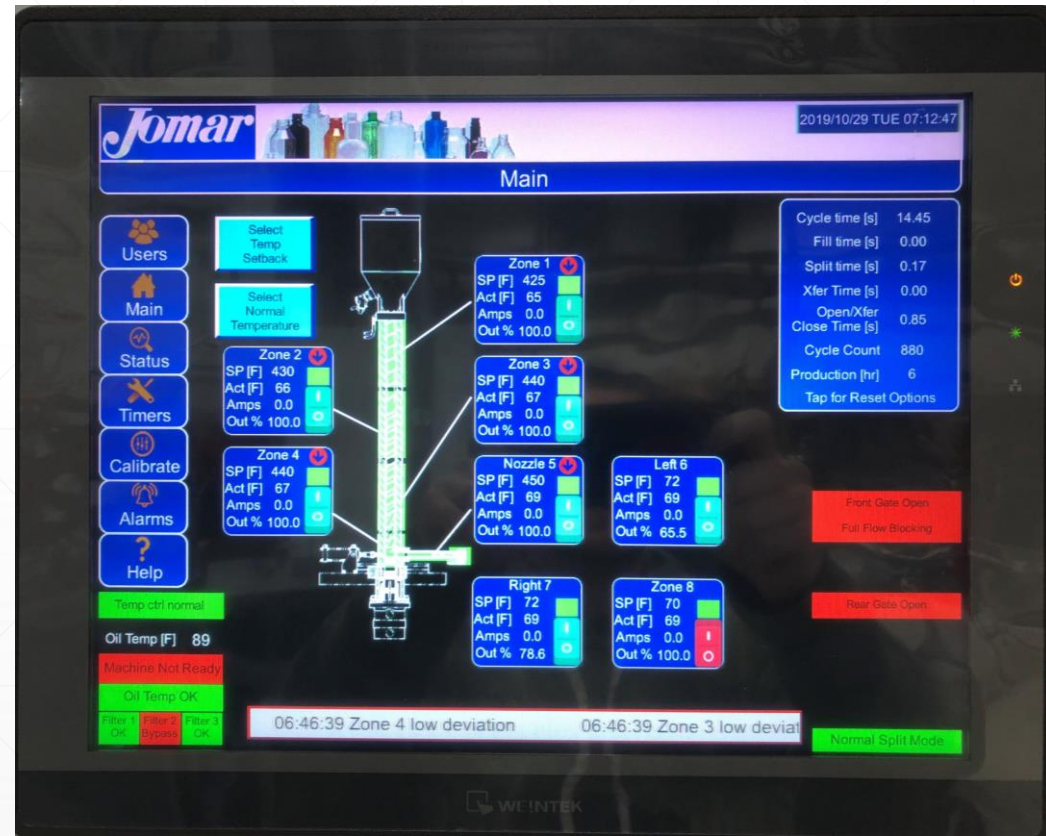




Jomar IntelliDrive Series

New Screen

- Large 15" screen
- Intuitive user interface
- New graphical display
- More functions and displays captured in PLC
- Added levels of security





Introduction of the Jomar IntelliDrive Series

Improvements for IntelliDrive machines include:

- Variable frequency drive
- Reinforced main platen
- Digital displacement transducers
- Ewon remote access
- Improved heat control system



- Additional heat zones
- New 15" screen
- New graphical interface
- New non-split mode
- Industry 4.0-capable components



Comparison of the Jomar IntelliDrive Series

Jomar IntelliDrive 85S vs. Competitor Equivalent

	Competitor equivalent	Jomar IntelliDrive Model 85S	Improvement %
Dry Cycle Time	2.5 seconds	1.8 Seconds	28.0%
Avg. Running kW	45 kW	28 kW	37.8%
Oil Capacity	200 gallons	60 gallons	70.0%
Tower Water Required 80 degrees, 60 psi	35 gallons	15 Gallons	57.1%



Comparison of the Jomar IntelliDrive Series

Jomar IntelliDrive 85S vs. Standard Jomar 85S

	Standard Jomar 85S	Jomar IntelliDrive Model 85S	Improvement %
Dry Cycle Time	2.3 seconds	1.8 Seconds	21.7%
Avg. Running kW	41 kW	28 kW	31.7%
Oil Capacity	100 gallons	60 gallons	40.0%
Tower Water Required 80 degrees, 60 psi	30 gallons	15 Gallons	50.0%



Comparison of the Jomar IntelliDrive Series

Jomar IntelliDrive 135 vs. Competitor Equivalent

	Competitor equivalent	Jomar IntelliDrive Model 135	Improvement %
Dry Cycle Time	3.0 seconds	2.3 Seconds	23.3%
Avg. Running kW	66 kW	36 kW	45.5%
Oil Capacity	250 gallons	90 gallons	64%
Tower Water Required 80 degrees, 60 psi	35 gallons	15 Gallons	57.1%



Comparison of the Jomar IntelliDrive Series

Jomar IntelliDrive 135 vs. Standard Jomar 135

	Standard Jomar 135	Jomar IntelliDrive Model 135	Improvement %
Dry Cycle Time	3.0 seconds	2.3 Seconds	23.3%
Avg. Running kW	59.5 kW	36 kW	46.8%
Oil Capacity	150 gallons	90 gallons	40.0%
Tower Water Required 80 degrees, 60 psi	25 gallons	15 Gallons	40.0%



Comparison of the Jomar IntelliDrive Series

Jomar IntelliDrive 175 vs. Standard Jomar 175

	Standard Jomar 175	Jomar IntelliDrive Model 175	Improvement %
Dry Cycle Time	3.0 seconds	2.3 Seconds	23.3%
Avg. Running kW	76 kW	48.1 kW	36.7%
Oil Capacity	200 gallons	100 gallons	50.0%
Tower Water Required 80 degrees, 60 psi	31 gallons	20 Gallons	35.5%



Comparison of the Jomar IntelliDrive Series

Jomar IntelliDrive 175 vs. Competitor Equivalent

	Competitor equivalent	Jomar IntelliDrive Model 175	Improvement %
Dry Cycle Time	3.0 seconds	2.3 Seconds	23.3%
Avg. Running kW	55 kW	48.1 kW	12.5%
Oil Capacity	250 gallons	100 gallons	60.0%
Tower Water Required 80 degrees, 60 psi	35 gallons	20 Gallons	42.9%

Jomar[®]



IntelliDrive™ Series

Smart Machines that increase production and reduce costs
