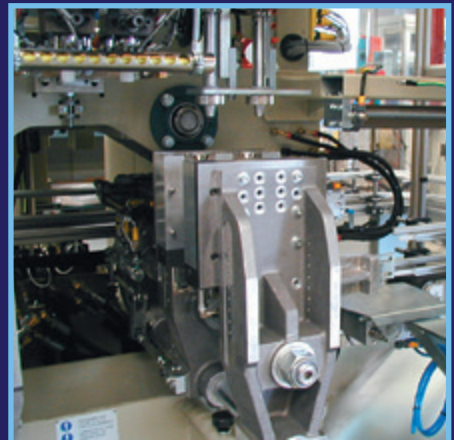
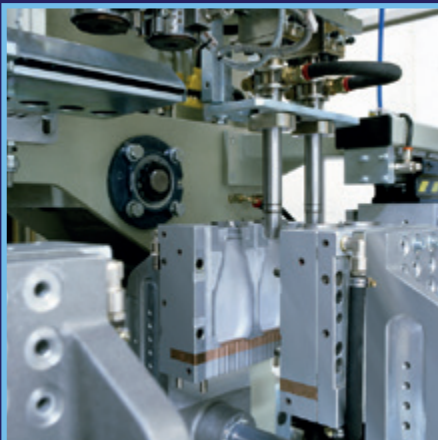


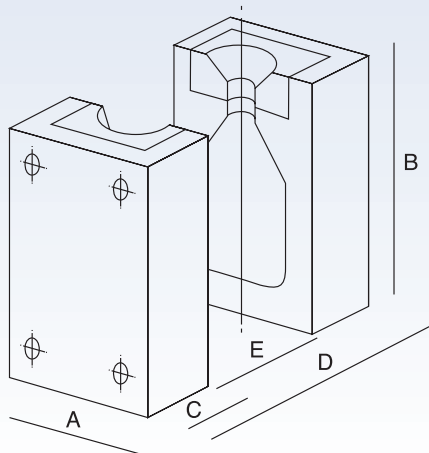
Continuous Extrusion Shuttle Blow Molding Machine

For Production of Plastic Containers



General Specifications

	US				Metric			
Carriage Horizontal Shuttle Stroke	10 inches				255 mm			
Dry Cycle	1.400s				1.400s			
Clamp Force	2.3 US tons				21 kN			
Air Pressure	87 -116 psi				6 - 8 bar			
Air Consumption (Estimated)	35 cfm				1000 lt/min			
Hydraulic Cooling Capacity	19,035 btu/hr				4800 kcal/hr			
Mold Cooling Capacity	674 btu/hr (HDPE)				170 kcal/hr (HDPE)			
Water Cooling Pressure (Min)	44 psi				3 bar			
Pump Motor Power	20 hp				15 kW			
Total Power Installed (Estimated)	75 kW				75 kW			
Dimensions	95 x 122 x 122 inches				2400 x 3100 x 3100 mm			
Total Weight	7718 lbs				3500 kg			
Production Possibilities								
CAVITIES	1	2	3	4	1	2	3	4
Max Center	-	4.33 inches	2.76 inches	2.17 inches	-	110 mm	70 mm	55 mm
Max Container Width	3.94 inches	3.54 inches	2.17 inches	1.57 inches	100 mm	90 mm	55 mm	40 mm
Max Container Height	7.87 inches	6.3 inches	5.9 inches	5.9 inches	200 mm	160 mm	150 mm	150 mm
Max Container Depth	4.33 inches	-	-	-	110 mm	-	-	-
Container Capacity Approx	.26 gals	.09 gals	.07 gals	.04 gals	1 L	.33 L	.25 L	.15 L
Extruders	50/24D		60/25D		50/24D		60/25D	
Screw Diameter	2 inches		2.4 inches		50 mm		60 mm	
Extruder Motor Power	20 hp		31 hp		15.1 kW		23.5 kW	
Max Throughput = PE	104 lbs/hr		132 lbs/hr		47 kg/hr		60 kg/hr	
Max Throughput = PP	88 lbs/hr		101 lbs/hr		40 kg/hr		46 kg/hr	
Heating Power	8.4 kW		11.7 kW		8.4 kW		11.7 kW	
Clamping								
Max Width (A)	9.84 inches				250 mm			
Min Length (B)	10.6 inches				270mm			
Minimum Depth (C)	3.15 inches				80 mm			
Clamp Open Max Daylight (D)	11.8 inches				300 mm			
Open Stroke (E)	5.51 inches				140 mm			
Mold Weight Max	99 lbs				45 kg			



Jomar[®]

Exclusive North American Distributor
of Automa EBM Machines

automa by **magic**

115 East Parkway Drive
Egg Harbor Township, NJ 08234 USA
1-609-646-8000
jomarcorp.com
sales@jomarcorp.com