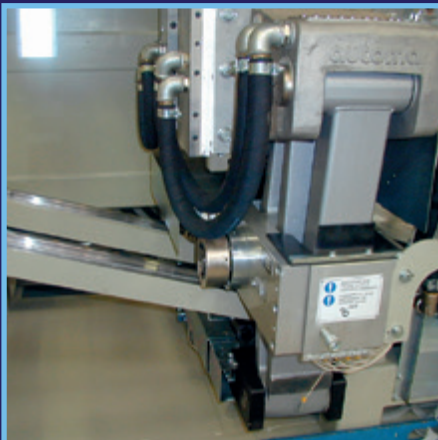


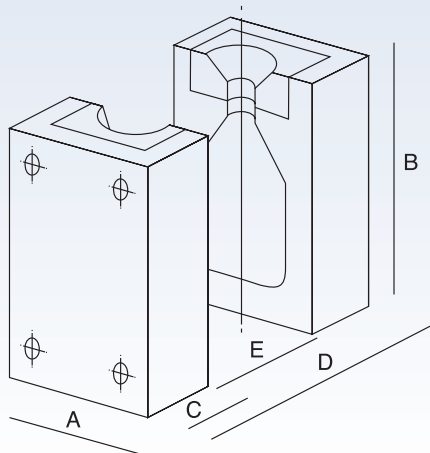
## Continuous Extrusion Shuttle Blow Molding Machine

For Production of Plastic Containers



## General Specifications

	US						Metric							
Carriage Horizontal Shuttle Stroke	21.7 inches						550 mm							
Dry Cycle	3s						3s							
Clamp Force	16.5 US tons						150 kN							
Air Pressure	87 -116 psi						6 - 8 bar							
Air Consumption (Estimated)	53 cfm						1500 lt/min							
Hydraulic Cooling Capacity	29,742 btu/hr						7500 kcal/hr							
Mold Cooling Capacity	674 btu/hr (HDPE)						170 kcal/hr (HDPE)							
Water Cooling Pressure (Min)	44 psi						3 bar							
Pump Motor Power	25 hp						18.5 kW							
Total Power Installed (Estimated)	105 kW						105 kW							
Dimensions	130 x 12 x 138 inches						3300 x 300 x 3500 mm							
Total Weight	26,460 lbs						12,000 kg							
<b>Production Possibilities</b>														
CAVITIES	1	2	3	4	5	6	1	2	3	4	5	6		
Max Center	-	9.4 inches	6.5 inches	4.9 inches	3.9 inches	3.3 inches	-	240 mm	165 mm	125 mm	100 mm	85 mm		
Max Container Width	11.4 inches	8.3 inches	5.7 inches	4.1 inches	3.3 inches	2.7 inches	290 mm	210 mm	145 mm	105 mm	85 mm	70 mm		
Max Container Height	16.5 inches	16.5 inches	13.8 inches	13.8 inches	11.8 inches	11.8 inches	420 mm	420 mm	350 mm	350 mm	300 mm	300 mm		
Max Container Depth	9.4 inches	-	-	-	-	-	240 mm	-	-	-	-	-		
Container Capacity Approx	2.6 gals	1.6 gals	.8 gals	.5 gals	.4 gals	.2 gals	10 L	6 L	3 L	2 L	1.5 L	.75 L		
<b>Extruders</b>			<b>80/24D</b>			<b>70/25D WT</b>			<b>80/24D</b>			<b>70/25D WT</b>		
Screw Diameter	3.1 inches			2.76 inches			80 mm			70 mm				
Extruder Motor Power	58 kW			36 kW			58 kW			36 kW				
Max Throughput = PE	342 lbs/hr			331 lbs/hr			155 kg/hr			150 kg/hr				
Max Throughput = PP	231 lbs/hr			243 lbs/hr			105 kg/hr			110 kg/hr				
Heating Power	18.3 kW			17 kW			18.3 kW			17 kW				
<b>Clamping</b>														
Max Width (A)	21.7 inches						550 mm							
Min Length (B)	19.7 inches						500 mm							
Minimum Depth (C)	6.7 inches						170 mm							
Clamp Open Max Daylight (D)	24 inches						610 mm							
Open Stroke (E)	10.6 inches						270 mm							
Mold Weight Max	882 lbs						400 kg							



**Jomar**<sup>®</sup>

Exclusive North American Distributor  
of Automa EBM Machines

**automa** by **magic**

115 East Parkway Drive  
Egg Harbor Township, NJ 08234 USA  
1-609-646-8000  
jomarcorp.com  
sales@jomarcorp.com